



How to Monitor ~~not just~~ starring performance and Usage of Discoverer

Easy Administration, Performance
and Documenting EUL and
Workbooks

-Nilesh Jethwa

About



- Founder of RudraSoft
- Oracle Apps, BI + DW expertise
- Specialized in CPM (FCH, EPB, DBI)
- 10 yrs of IT experience
- Blog: <http://www.AppsBI.com>
- Core Product:
<http://www.InfoCaptor.com>

Session Objectives

- Discuss Discoverer Meta-Data structure
- Usage Metrics for BA, Folders, Workbooks
- Benchmarking Workbooks
- Documentation Samples
- Live Demo
- Q & A

Business Area Metric

- Base table eu15_bas (Business Area)

< Business Areas > [-]

(++Drill) Business Area	Key	All Folder Total	Filter Total	Access Granted Total	Work Book Total	Ba Id
ABM Activities	ABM_ACTIVITIES	12	2	7	2	100018
ABM Cost Objects	ABM_COST_OBJECTS	9	0	7	2	100020
ABM Departments	ABM_DEPARTMENTS	5	0	7	2	100022
ABM Materials	ABM_MATERIALS	6	0	7	2	100024
Audience Workbench - Organiz...	AMS_BA_AUDIENCE_WOR...	13	0	7	0	100026
Audience Workbench - Person	AMS_BA_AUDIENCE_WOR...	15	0	7	0	100028
AMV_Ctrl_Reps	AMV_CONTROL_REPORT	0	0	0	0	100030
HRMS - Administration - Compe...	BEN_ADMIN_HRMS_CORE_...	299	448	8	6	100032
HRMS - Administration - Compe...	BEN_ADMIN_HRMS_CORE_...	276	453	8	0	100034
HRMS - Compensation and Ben...	BEN_COMP_PRTT	35	171	8	6	100036
HRMS - Compensation and Ben...	BEN_PLAN_DESIGN	52	262	8	0	100038
Survey Analysis	BIX_IES_SURVEY_ANALY...	15	0	5	6	100040
Cash Forecasting	CE_FORECAST	17	2	8	1	100042
Cash Positioning	CE_POSITION	23	2	8	2	100044



Business Area Considerations

- Keep it small



- Should serve a purpose
 - It should cater to a group of users, not an individual
 - It should be actively used
 - You don't need a BA for just one workbook

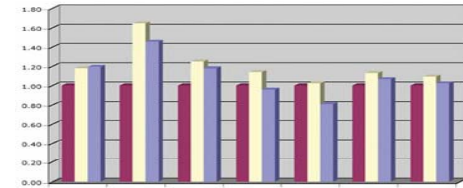
Folder Metrics

- Do you need one folder for each report?
- How many folders should it join to?
- How big the folder should be?

< Folders > (Business Area = HRMS - Compensation and Benefits (Participant)) [-]

(++Drill) Folder	Folder Hidden	Folder Type	Description	Item Total	Join Total	Work Book Total	Folder Id
Participant Eligibility	Visible	Compl...	This folder displays informati...	56	0	0	104627
Participant Monthly Premium	Visible	Compl...	This folder identifies the mont...	25	0	1	104626
Participant Plan Reimbursement	Visible	Compl...	This folder identifies the cost ...	29	2	0	104628
Participant Plan Reimbursement - Certif...	Visible	Simple	This folder identifies the parti...	17	0	0	102229
Participant Plan Reimbursement - Good...	Visible	Compl...	This folder identifies the good...	3	1	0	104629
Participant Plan Reimbursement - Paym...	Visible	Compl...	This folder identifies the pay...	7	0	0	104630
Person	Visible	Simple	People (from PER_PEOPLE_F ...	148	68	3	103944
Person - Element Entries	Visible	Compl...	This folder identifies all the el...	14	1	0	104623
Person - Life Event	Visible	Compl...	This folder identifies all life ev...	17	1	2	104610
Person - Potential Life Event	Visible	Compl...	This folder identifies the pote...	14	0	2	104606
Person Assignment	Visible	Compl...	All people and thier assignme...	167	13	4	104774
Person Assignment with Address (Pri...	Visible	Compl...	All people and assignment inf...	203	13	0	104773
Person Benefit Balance	Visible	Compl...	This folder identifies the valu...	12	0	0	104608
Person Communication	Visible	Compl...	This folder identifies persons...	35	0	0	104609

Benchmarking



- Do not just test your queries in Toad or any GUI tool
- Test your workbooks for the “Opening” time
 - Determine if your workbook needs diet control
- Test your workbooks for actual run-time
 - Test it on Desktop, Plus and Viewer
 - Determine if the query needs tuning

Workbook Metrics

- How big is your workbook?
- How many items in the workbook?
- How many joins and conditions?

< Workbook Details >

[-]

(++Drill) Workbook Name	Size [kb]	Days Old	Item Total	Join Total	Shared Doc To Developer Total Key	Doc Id
GL Code Combinations	20	53	16	0	1 ELEMENT55	303297
GL Transactions with AP Details	41	55	36	2	2 ELEMENT7	302440
HRMS (FR) - Bilan Employment	1542	62	22	12	1 PERFRBLE	285043
HRMS (FR) - Bilan Hygiene and Sa...	581	62	12	6	1 PERFRBLH	285044
HRMS (FR) - Bilan Other Working C...	525	62	7	3	1 PERFRBLC	285042
HRMS (FR) - Bilan Professional Bo...	73	62	6	3	1 PERFRBLP	285045
HRMS (FR) - Bilan Remuneration	343	62	15	6	1 PERFRBLR	285046
HRMS - Applicant Detail	250	62	288	20	4 HRIPRAPD	284922
HRMS - Appraisal Detail	37	62	138	12	6 HRITLTAD	284945
HRMS - Budget Setup List	21	62	51	0	3 HRIABSTP	284857
HRMS - Candidate Detail	105	62	316	28	4 HRIPRCND	284924
HRMS - Competence (Skill) Develo...	34	62	116	0	4 HRIPSKLL	284931
HRMS - Competence Updates after ...	36	62	138	18	6 HRITLTCT	284946
HRMS - Compliance (United States ...	46	62	152	0	4 HRIPCOMP	284897

Workbook Details

- Browse Items and Joins in a workbook

< **Workbook Dependencies** > (WORKBOOK_NAME = HRMS (FR) - Bilan Hygiene and Safety)

Workbook Name	Dependency Type	Folder	Dependency Name
HRMS (FR) - Bilan Hygiene and Safety	Join	Results (Bilan Social) - 1 Item An...	Employee Category (Item Value ID) - Results 1 It...
HRMS (FR) - Bilan Hygiene and Safety	Join	Results (Bilan Social) - 1 Item An...	Year (Process Run ID) - Results 1 Item
HRMS (FR) - Bilan Hygiene and Safety	Join	Results (Bilan Social) - 1 Item An...	Work Accident Code (Item Value ID) - Results 1 ...
HRMS (FR) - Bilan Hygiene and Safety	Join	Results (Bilan Social) - 1 Item An...	Illness Type (Item Value ID) - Results 1 Item
HRMS (FR) - Bilan Hygiene and Safety	Join	Results (Bilan Social) - 2 Items A...	Employee Category (Item Value ID) - Results 2 It...
HRMS (FR) - Bilan Hygiene and Safety	Join	Results (Bilan Social) - 2 Items A...	Year (Process Run ID) - Results 2 Items
HRMS (FR) - Bilan Hygiene and Safety	Item	Employee Category (Bilan Social)	Employee Category
HRMS (FR) - Bilan Hygiene and Safety	Item	Illness Type (Bilan Social)	Illness Type
HRMS (FR) - Bilan Hygiene and Safety	Item	Results (Bilan Social) - 1 Item An...	Sequence Number
HRMS (FR) - Bilan Hygiene and Safety	Item	Results (Bilan Social) - 1 Item An...	Process Run Name
HRMS (FR) - Bilan Hygiene and Safety	Item	Results (Bilan Social) - 1 Item An...	Item value 1
HRMS (FR) - Bilan Hygiene and Safety	Item	Results (Bilan Social) - 2 Items A...	Item usage1 item value1
HRMS (FR) - Bilan Hygiene and Safety	Item	Results (Bilan Social) - 2 Items A...	Sequence number1
HRMS (FR) - Bilan Hygiene and Safety	Item	Results (Bilan Social) - 2 Items A...	Process run name

Workbook Sharing Info

- Find Users and Responsibilities shared to

< Workbook Sharing Info > (WORKBOOK_NAME = HRMS - Appraisal Detail)

[-]

Workbook	Shared With	Shared With Date
HRMS - Appraisal Detail	>> Business Views Setup	23-Jul-2007
HRMS - Appraisal Detail	>> Human Resources Intelligence - Administrator (OLTP)	23-Jul-2007
HRMS - Appraisal Detail	>> Human Resources Intelligence - Analytics User	23-Jul-2007
HRMS - Appraisal Detail	>> Human Resources Intelligence - End User	23-Jul-2007
HRMS - Appraisal Detail	>> Human Resources Intelligence - Enterprise Data Warehouse	23-Jul-2007
HRMS - Appraisal Detail	>> System Administrator	23-Jul-2007

Folder usage by workbook

- Determine which folders are actively used in a workbook

Workbook Name Like [-]
ABM%Activity% ▼

< **Workbook Folder Usage** > [-]

Workbook Name	Folder	Folder Key
ABM: Activity Cost and Rate Data	Activity Accounts	ABM_ACTIVITY_ACCOUNTS
ABM: Activity Cost and Rate Data	Activity Driver Sources	ABM_ACTIVITY_DRIVER_S...
ABM: Activity Cost and Rate Data	Activity Drivers	ABM_ACTIVITY_DRIVERS
ABM: Activity Cost and Rate Data	Activity Rate Sets	ABM_ACTIVITY_RATE_SETS
ABM: Activity Cost and Rate Data	Activity Rates	ABM_ACTIVITY_RATES
ABM: Activity Cost and Rate Data	Activity Statistics	ABM_ACTIVITY_STATISTICS

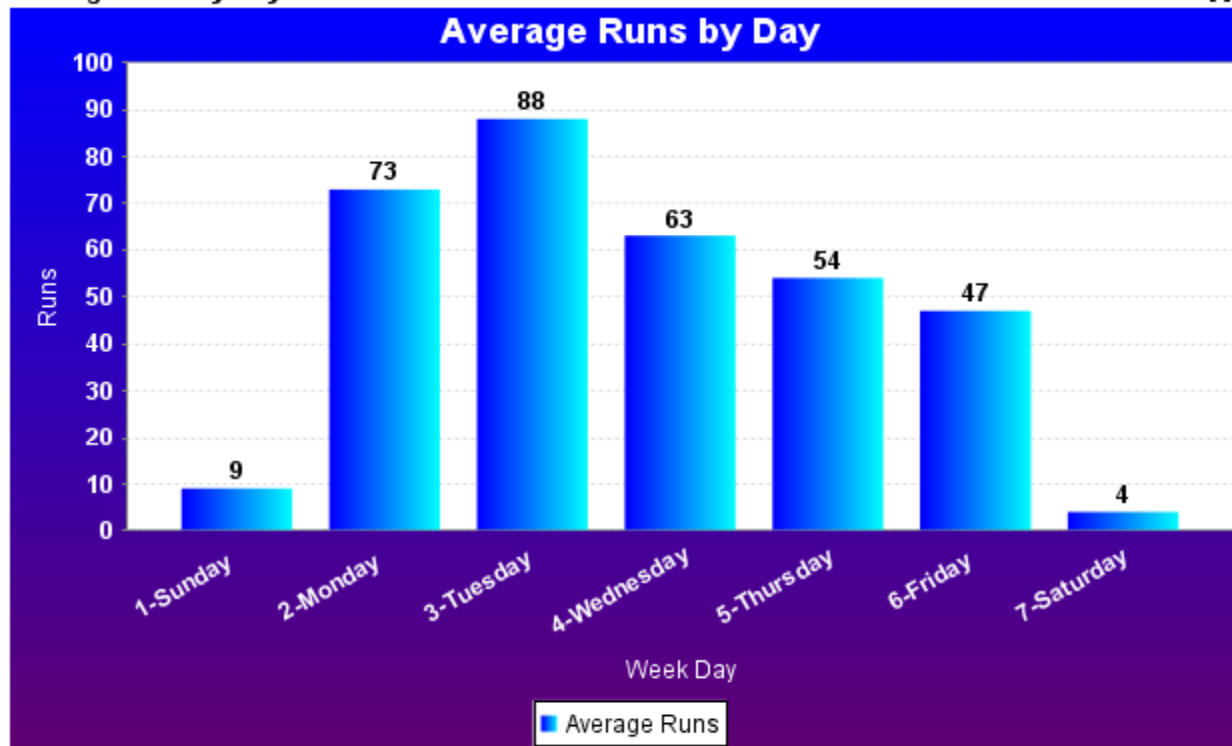
Measure Performance

- Statistics table – eul5_qpp_stats

EUL Owner [-] *Period Range* [-]
EUL5_US 30

Average Runs by Day

[+]

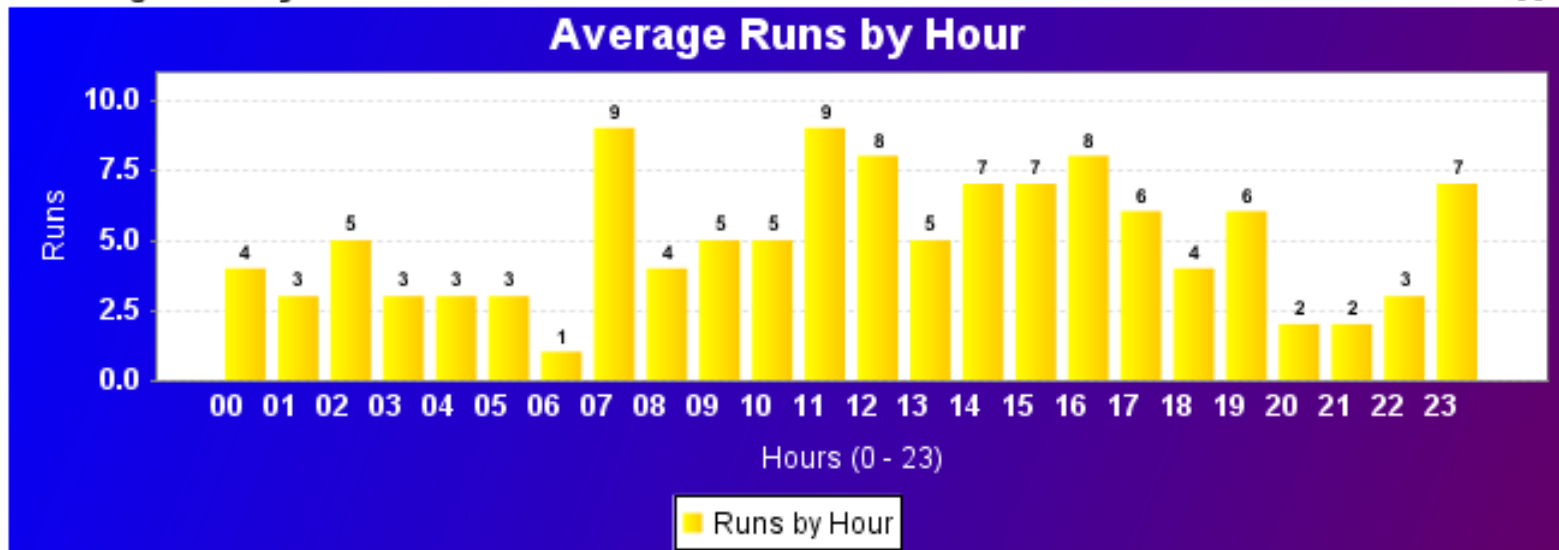


More Stats

- By Hour

< Average Runs by Hour >

[]

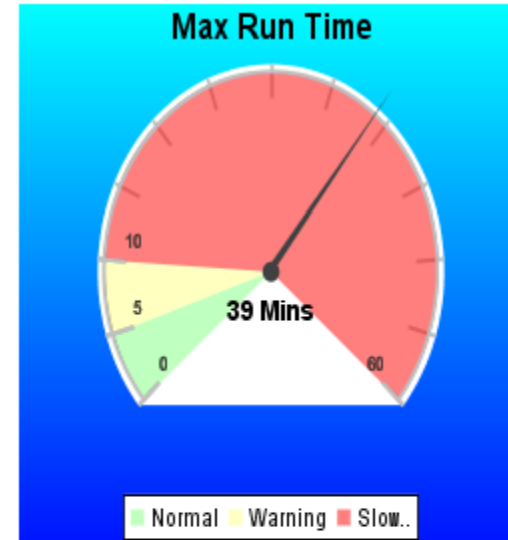


Longest running..

- Slowest workbook

EUL Owner [-] EUL5_US
Period Range [-] 30

Max Run Time [-]



Sort by [-]

elapsed_time

< Top Reports >

Work	Worksh	Cost	Cpu Time	Elapsed Time	Rows Fetched
TM...	Offers ...	506	225	249	333
OM...	Intern...	360379	141	178	10145
AR ...	AWS ...	6810	148	158	5
AR ...	AWS ...	12103	137	157	6
AR ...	AR A...	126	102	103	68
OM...	RMA ...	10098	88	100	15645
AR ...	AR A...	110	89	90	31
AR ...	AWS ...	11040	71	84	9

Overall Metrics

- What is the rate of new workbooks?
- How many un-used workbooks?

< Summary >		[-]
Category		Cnt
New Workbooks		36
Updated Workbooks		56
Un-Used Workbooks		340
Business Areas		115
Folders		3137
Items		97306

Documentation



- Everyone likes to have
- Nobody wants to do it
- Too time consuming
- Tough to keep in sync
- Is there a better way?

PDF Document

- Two click – Automatic PDF document

Business Areas

Business Area	Key	Creator	Creation Date	Updated By	Last Update Date	Number Of Times Modified	Ba Id
Video Store Tutorial	VIDEO_STORE_TUTORIAL	SYSTEM	25-Oct-2006	SYSTEM	25-Oct-2006	0	100018
Discoverer V5 - OWB Lineage	OWB_EUL5_LINEAGE	SYSTEM	25-Oct-2006	SYSTEM	25-Oct-2006	0	100568
The Discoverer V5 EUL	THE_DISCOVERER_V5_EUL	SYSTEM	25-Oct-2006	SYSTEM	25-Oct-2006	0	100570

Video Store Tutorial

Folders

Folder	Folder Hidden	Folder Type	Description	Folder Key	Last Updated	Folder Id
Alternate Sort Days	Hidden	Custom	Alternate Sort Days	DC_ALTERNATE_SORT_DAYS	25-Oct-2006	100033
Alternate Sort Store Size	Hidden	Custom	Alternate Sort Store Size	DC_ALTERNATE_SORT_STORE_SIZE	25-Oct-2006	100035
Calendar Date	Visible	Simple	Calendar Dates	DC_CALENDAR_DATE	25-Oct-2006	100024
Fiscal Date	Visible	Simple	Fiscal Dates	DC_FISCAL_DATE	25-Oct-2006	100025
Monthly Sales Analysis	Visible	Complex	Monthly Sales Analysis	DC_MONTHLY_SALES_ANALYSIS	25-Oct-2006	100030
Products	Visible	Simple	Information about products	DC_PRODUCT	25-Oct-2006	100026
Sales Facts	Visible	Simple	Sales Fact Information	DC_SALES_FACT	25-Oct-2006	100027
Store	Visible	Simple	Information about stores	DC_STORE	25-Oct-2006	100028
Stores and Sales Details	Visible	Complex	This folder groups together store and sales details	DC_STORE_AND_SALES_DETAILS	25-Oct-2006	100031
Target Sales	Visible	Simple	Target Sales Information	DC_TARGET_SALES	25-Oct-2006	100029
Video Analysis Information	Visible	Complex	This folder contains commonly used reporting items	DC_VIDEO_ANALYSIS_INFORMATION	25-Oct-2006	100032

HTML Document

Powered by InfoCaptor

[Next Page](#)

- [Parameters](#)
- [Version](#)
- ▣ [Business Areas](#)
 - ⊕ [Video Store Tutorial](#)
 - ⊕ [Discoverer V5 - OWB Lineage](#)
 - ⊕ [The Discoverer V5 EUL](#)
- ⊕ [Workbook Info](#)
- [Workbook Summary](#)
- [Privileges](#)

Parameters

No	Parameter	Value
1	Date/Time	Report generated on 27-MAR-2007 05:08:33
2	EUL Owner	ALL Values
3	EUL Prefix	EUL5
4	Workbook Creator	ALL Values
5	BA Creator	ALL Values

Version

Version
5.1.1.0.0.0

Business Areas

Business Area	Key	Creator	Created By	Creation Date	Updated By	Last Update Date	Number Of Times Modified	Ba Id
Video Store Tutorial	VIDEO_STORE_TUTORIAL	SYSTEM	SYSTEM	25-Oct-2006	SYSTEM	25-Oct-2006	0	100018
Discoverer V5 - OWB Lineage	OWB_EUL5_LINEAGE	SYSTEM	SYSTEM	25-Oct-2006	SYSTEM	25-Oct-2006	0	100568
The Discoverer V5 EUL	THE_DISCOVERER_V5_EUL	SYSTEM	SYSTEM	25-Oct-2006	SYSTEM	25-Oct-2006	0	100570

Next Steps..

- Download the SQL scripts and create your own Dashboards and reports

OR

- Save time and use the pre-built Discoverer Dashboard

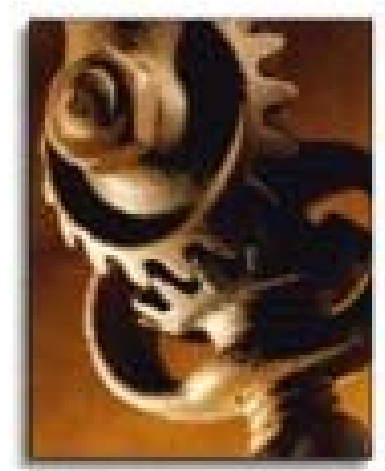
Final Thoughts

- Are you considering Dashboards?
- Do you think your BI effort is going nowhere?



Little bragging - InfoCaptor

- Web-based Dashboard application
- Extremely Rich UI and Interactive
- Integrates with Oracle Apps
- Role and Group based Access
- Oracle Apps or Custom Security Model
- Merge Data-warehouse and ERP on a single Dashboard



Thank You

Q & A